

# MONTHLY MEMBERSHIP PROGRESS REPORT

District 31 L

Results as of: 4/30/2025

GMT:

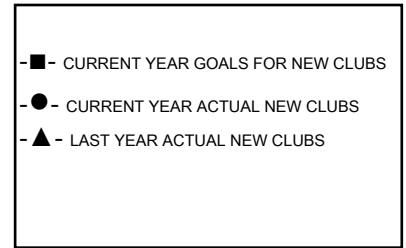
LOCATION NORTH CAROLINA

GMT CA

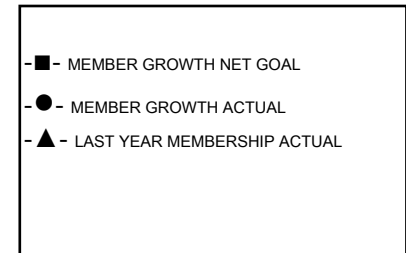
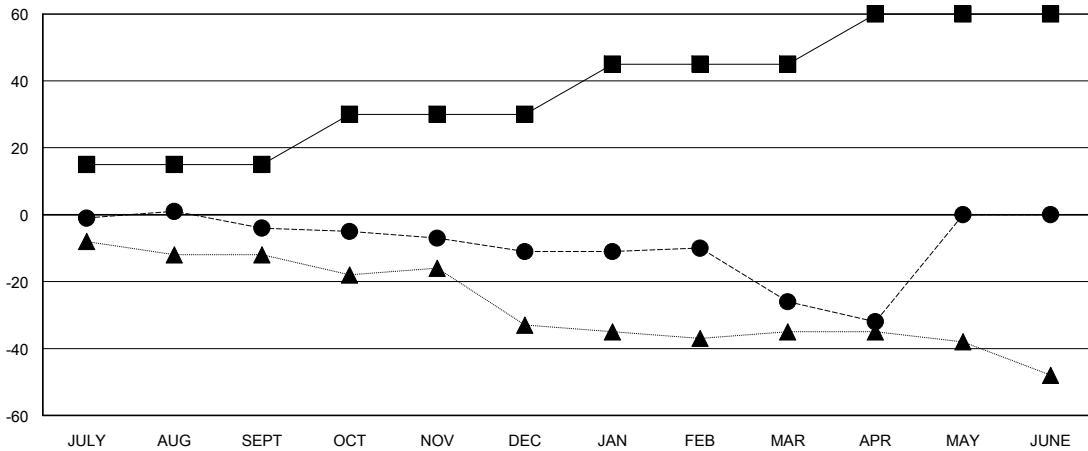
Clubs			
RESULTS FOR 2024-2025			
QUARTER	NEW CLUB GOAL	NEW CLUBS	DROPPED CLUBS
JULY/AUG/SEPT	0	0	0
OCT/NOV/DEC	1	0	0
JAN/FEB/MAR	0	0	1
APR/MAY/JUNE	0	0	1

Members			
RESULTS FOR 2024-2025			
QUARTER	MEMBER GROWTH NET GOAL	MEMBER GROWTH ACTUAL	DROPPED MEMBERS ACTUAL (including transfers)
JULY/AUG/SEPT	15	15	17
OCT/NOV/DEC	15	26	24
JAN/FEB/MAR	15	12	24
APR/MAY/JUNE	15	1	7

GOALS AND ACTUAL NEW CLUBS CUMULATIVE



GOALS AND ACTUAL MEMBERS CUMULATIVE



DROPPED CLUBS: 2	16 CLUBS OF 46 ADDED 1 OR MORE NEW MEMBERS	<b>GENDER DISTRIBUTION</b> MALE 397 (59.25%) FEMALE 273 (40.75%)
<b>DROPPED MEMBERS</b> DECEASED 6 CLUB CANCELLED 11 OTHER 55 TOTAL 72	<a href="#">CLICK HERE FOR CUMULATIVE MEMBERSHIP DATA</a>	TOTAL FAMILY UNIT MEMBERS 0 FAMILY MEMBERS PAYING HALF DUES 0